

Fabbri Arte
Alto Antiquariato



FABBRI ARTE



Rosettes casket

Bone and fir wood

Venetian area

End of 14th – Beginning of 15th Century

Measures: 16,5 x 8 x 6 in

Work Analysis

The work in question is a casket in fir wood, entirely covered with finely engraved and sculpted bone plates.

The type of material and, above all, the method of processing recall the late Byzantine manufacturing, presumably pre-Embriaca (XIII-XIV century).

In fact, at the time, some examples of "rosette" worked bone caskets were made, inspired by models of the Byzantine tradition; the latter, however, were decorated with religious scenes and executed in ivory.

The work under analysis, datable between the end of the fourteenth and the beginning of the fifteenth century, on the other hand constitutes a resistance in taste to the aforementioned manufacturing of the Eastern Roman Empire.

Structurally, it has a rectangular shape with a squared and regular line, and is equipped with a sliding lid.

The whole surface is decorated with sculpted reliefs with geometric motifs, small repeated rosettes, and stylized forms of leaves joined together.

The perimeter is decorated with fourteen applied tiles; on each of them we find figurative representations of witty and caricatured characters, engaged in genre and profane scenes, a distinctive prerogative with respect to Byzantine production.

Finally, on the top we have a lid on which the representation of a Bacchanal is engraved, while in the central panel we observe the representation of an eagle fighting a snake.

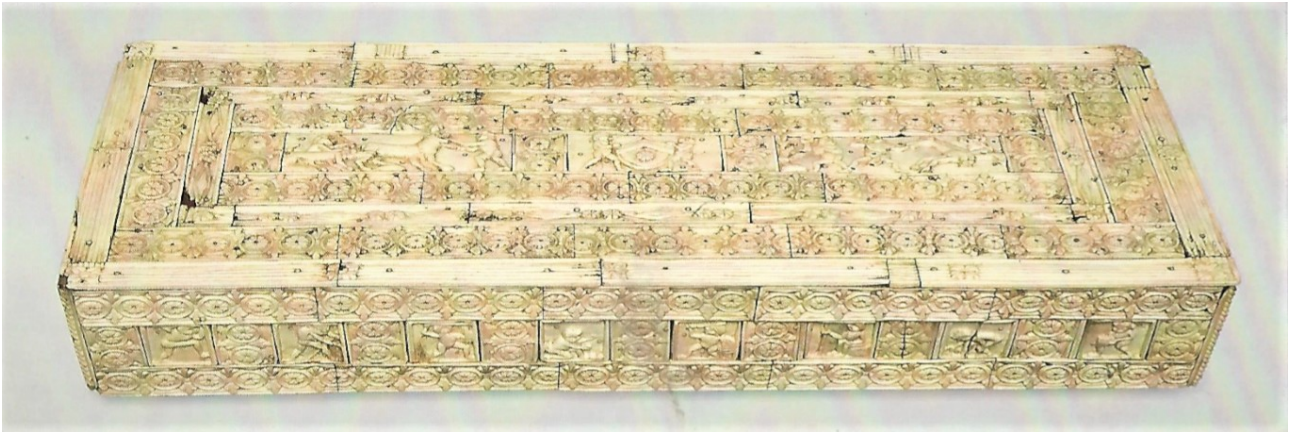
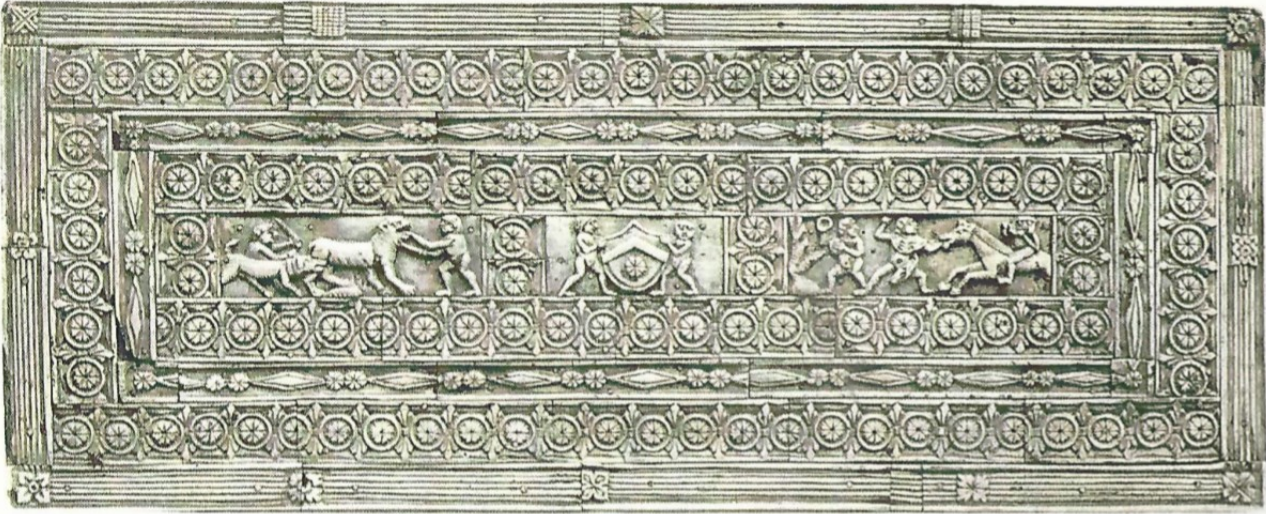
The human figures feature stocky bodies in order to elicit a humorous effect.

Below we find an example of this manufacture.

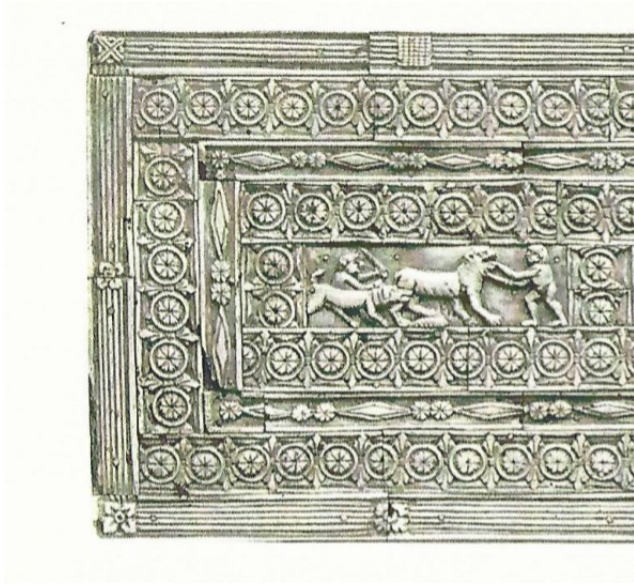
Note the tiles, the numerous rosettes, and the perimeter bars of the lid.

The following specimen is kept at the Bargello National Museum in Florence.





Below we can see a comparison between the aforementioned box and our specimen.



We then propose the photos of some details of the box under analysis.



Fabbri Arte
Alto Antiquariato

Ai sensi degli Art. 1490 – 1491 del Codice Civile, con la firma di questo documento Fabbri Arte di Juri Fabbri attesta e garantisce l'autenticità e la lecita provenienza dell'opera, come da D.L. n.42 del 22 gennaio 2004.



FABBRI ARTE DI FABBRI JURY
Piazza XXIV Maggio 9 Canedole
46048 Roverbella (MN)
Tel. 3381372919
fabbriarte@virgilio.it
www.fabbri-arte.com
P. IVA 02515790208
Cod. Fisc. FBBJRU78M08E897G